

ACCESS 2021/2022



*AN ALTERNATIVE PATHWAYS PROGRAM
FROM YEAR 9 TO YEAR 12 AT BCC*

Our Values



Respect

We earn respect for ourselves and from others through our actions

Equity

We show equality by being fair and providing opportunities for everyone

Achievement

We demonstrate achievement by setting goals, improving our responses and recognising success

Care

We are kind, caring and supportive of everyone in our community

Health

We look after our health including personal safety, hygiene, a good diet, exercise and enough sleep

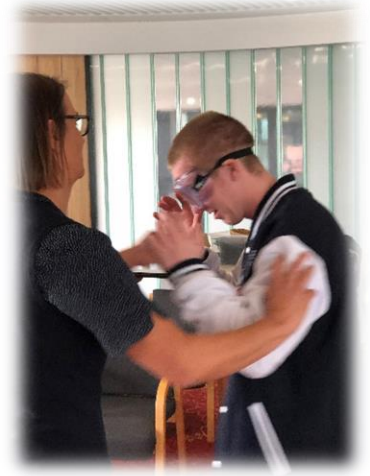
What is ACCESS?

- Support and work with other school programs
- Approved by the Dept of Education
- An integral part of the College community
- Resourced with a good budget and quality classrooms, quality staff and resources
- Aiming to make a real difference in educational outcomes
- Catering for individual needs within a highly structured program



Underpinning Philosophies

- All students can improve their educational outcomes given
 - clear goals
 - workable strategies
 - appropriate curriculum
 - constructive feedback
 - supportive environment (school, home, work)
- With assistance and appropriate subject selection, *most* students can graduate at the end of Year 12
- Students benefit from building strong working relationships with staff
- Links between workplace, school and home are critical to success for some students



Why have an ACCESS course?

Learning outcomes plateau for some students

Attendance or behaviour issues result

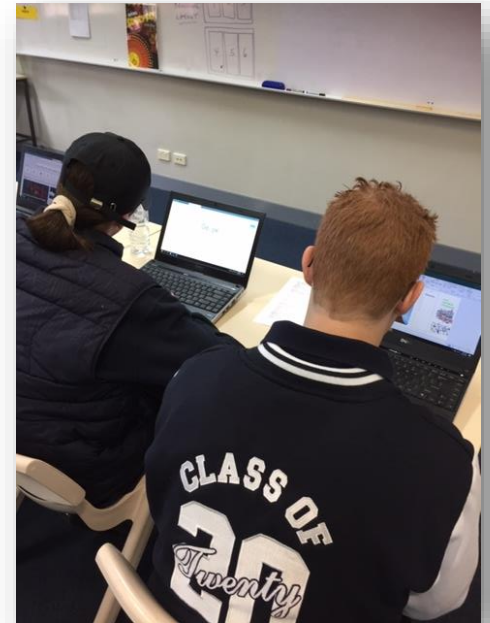
Flexibility required to meet individual needs

Personal attention benefits some students

Individual choices lead to success

Links from Year 9 to 12 courses critical

Career exploration assists in goal setting



Student Characteristics

Are achieving a C grade or below in key learning areas

NAPLAN or OLNA data below expected benchmarks.

Quiet students who may have learning difficulties

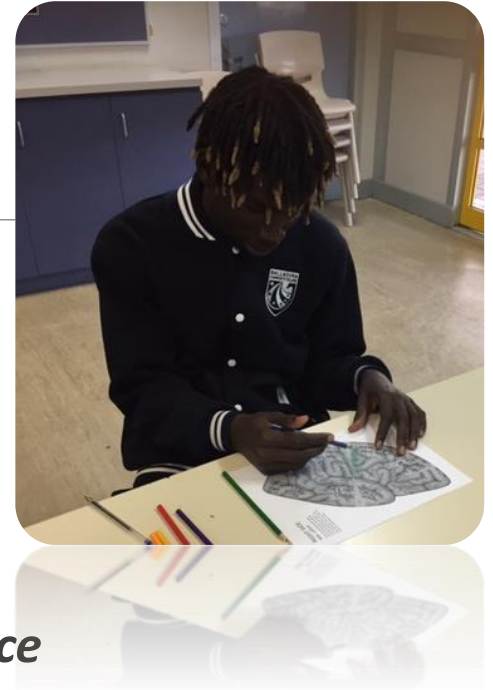
Students who have ESL but don't qualify for extra assistance

Have a clear career path and will benefit for VET courses

Have personal issues that may lead to attendance problems

Benefit from working in a home room environment

Have some behavior issues but willing to change given appropriate support



Fees



- **ACCESS is a fully optional course and as such, school charges are payable and compulsory.**
- **All parents make a commitment to paying fees**
- **All students make a commitment to use materials appropriately**
- **All teachers make a commitment to enhance learning**
- **The College makes a commitment to use these fees for ACCESS students**

(Concessions available for eligible parents)

ACCESS 10 pathway



Modified Mathematics aimed at further developing numeracy skills leading to **Foundations** or **Essential Mathematics Y11**

English aimed at improving and further developing literacy skills leading to **Foundations** or **General English Year 11**

Science based on WA Curriculum but at a more focused level developing understandings and laboratory skills leading to **Integrated Science in Year 11**.

Humanities and Social Sciences – History, Geography, Civics and Citizenship, Economics and Business leading to **Career and Enterprise in Year 11**

Health Education and Physical Education with mainstream leading to **Health Studies in Year 11**

2 courses per semester from *Arts and Technologies*

ACCESS Program

ACCESS 9
1 or 2 classes

*Maths Numeracy
English Literacy
Science
History & Social
Sciences*

Possible Try a Trade
Courses

Choice of Whole
School Courses +
Phys Ed + Health

Access 10
1 or 2 classes

*Maths Numeracy
English Literacy
Science
History & Social Sciences*

Work Experience
Careers Exploration
Try a Trade

Choice of Whole
School Courses +
Phys Ed + Health

Access 11
1 or 2 classes

*Foundation/ General English
Foundation/ Essential Maths
General Career and Ent
General Health Studies
General Integrated Science*

Authority Developed
Work Placement
Program

Possibility of
Traineeships
School based
Apprenticeships
Trade Training
Centre Courses

Access 12
1 or 2 classes

*General English
Foundation or Essential
Maths
General Health Studies
Cert II Business or
General Integrated Science
General Career and
Enterprise*

Authority Developed
Work Placement
Program

Traineeships
Assistance with
training enrolments
Career planning and
TAFE enrolments

Mainstream timetable

	Mon	Tue	Wed	Thur	Fri
1	Black	Brown	Light Green	Light Blue	Light Blue
2	Brown	Light Grey	Light Blue	Brown	Light Grey
3	Light Grey	Blue	Blue	Light Green	Black
4	Light Blue	Light Green	Black	Light Blue	Blue
5	Light Blue	Black	Light Blue	Light Grey	Light Green

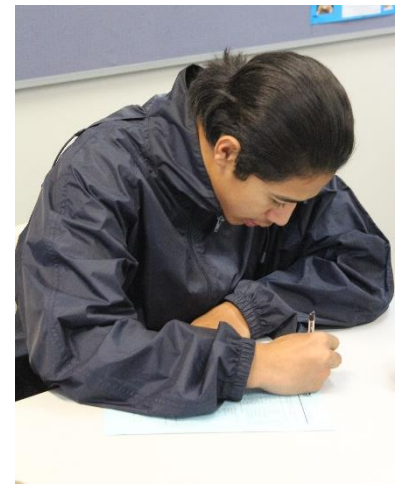
8 courses, 8 teachers, 8 different rooms

ACCESS 9 or 10 timetable

	Mon	Tue	Wed	Thur	Fri
1	Arts/ Tech	General	General	General	General
2	Arts/ Tech	Studies	Studies	Arts/ Tech	Studies
3	General	Health		Studies	General
4		Arts/Tech	Phys Ed	General	Studies
5	Studies	Arts/Tech	Phys Ed	Studies	Arts/Tech

ACCESS 9 or 10 Features

- 16 hours in home room
- 2 x 3 hour courses in Technology/ Arts
- Health and Physical Education – 3 hours / week
- Flexible timetable
- Flexible curriculum
- 1 key teacher
- Home room for most classes
- 24 students per class

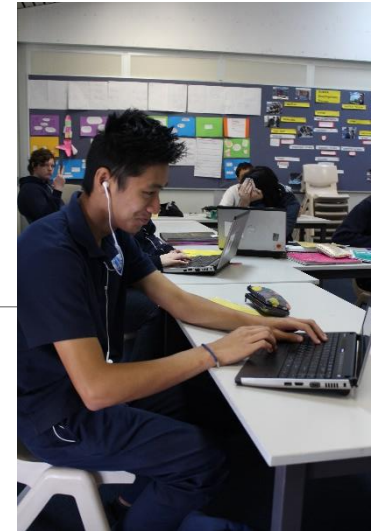


What's different?



- **Maths, Science, English and HaSS integrated where possible to provide high interest student centred learning**
- **Support to improve OLNA results**
- **Preparation for specific Year 11 Courses**
- **Focus on test success in Literacy and Numeracy for WACE**
- **Try a Trade and/or Work Experience opportunities**
- **Structured lessons that lead to open ended tasks**
- **Oral, pictorial, group activities as well as written tasks**
- **Technology to enhance learning, assist literacy and numeracy**
- **Most work completed in class**
- **Regular parent contact re attendance, behaviour, progress**

Comparing courses



Mainstream

- Marks and Grades
- Continuous assessment
- Individual learning area teams
- Specialised curriculum
- One teacher per subject
- Structured timetable
- Independent, motivated learners

Access

- Marks and Grades
- Continuous assessment
- Program team integrates curriculum
- Teachers responsible for several learning areas
- Flexibility in timetable
- Teachers support students to be successful learners

WACE Graduation

MUST meet Online Literacy and Numeracy Requirements

MUST complete 20 courses over 2 years

MUST attain at least 14 C Grades over 2 years

MUST complete ATAR or General courses including English
or achieve a Certificate II if doing Foundations course

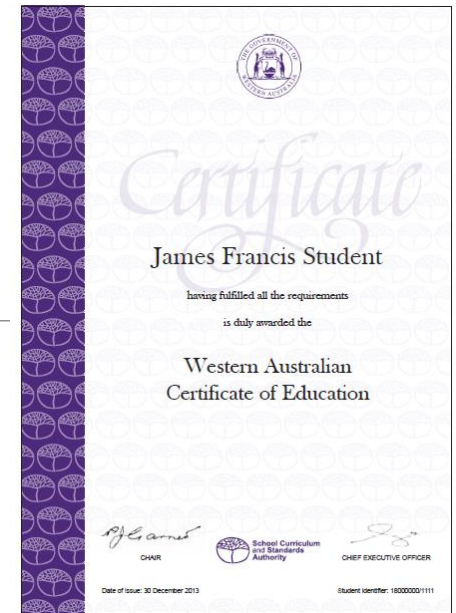
Attendance should be 90% or greater

VET Courses can be included – Cert II Business

School based traineeships can be included

**All students who complete Year 12 will receive a
Statement of Student Attainment**

Not all students will achieve a WACE



ACCESS 11 and 12 pathway



- Combination of school, VET, Traineeships work possible
- Workplace Learning blocks to experience career options
- Suite of related Subjects – no choices offered
- Foundation courses in Maths and English as required
- Moderated for comparability – Year 12 moderated task (EST)
- Flexible timetable
- Intensive learning over less time
- One or two teachers for all learning areas
- Education Assistants for extra support
- Focus on Literacy/ Numeracy/ Career and Social Education

Enrolment Flexibility

- Some students move from ACCESS 9 into Mainstream General courses in Year 10
- Some students move from ACCESS 10 into Mainstream General courses in Year 11
- Some students move from ACCESS 10, 11 or 12 into traineeships, TAFE courses or apprenticeships
- Some students move from mainstream courses into ACCESS at the end of Year 10 or Year 11 depending on results and pathway plans

ACCESS 11 Courses 2021

Health Studies General

Careers and Enterprise General

Integrated Science General

Mathematics Essential or Foundation

English General or Foundation

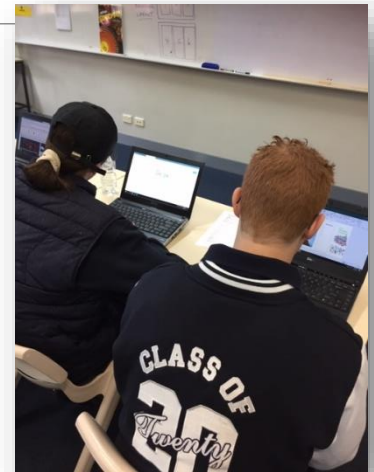
ADWPL Workplace Learning – Endorsed Unit

Opportunities for School based traineeships and
Apprenticeships

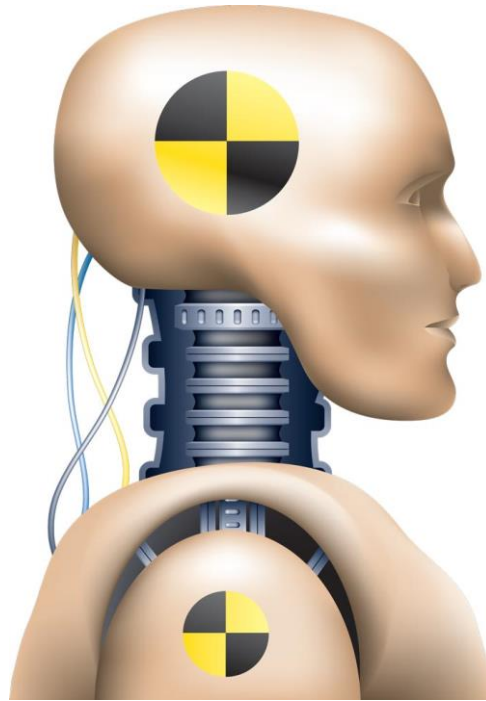


ACCESS 12 Courses 2021/ 2022

- Health Studies General
- Careers and Enterprise General
- Mathematics Essential or Foundation
- English General
- Certificate II Business or Integrated Science General
- ADWPL Workplace Learning
- Opportunities for School based traineeships and Apprenticeships



ACCESS is **NOT** for dummies



ACCESS students
choose to make a difference
to their learning

Year 9 and 10 Enrolment Process:

- Subject Selection booklet distributed **Friday July 24**
- Signed enrolment forms due TO **MAIN ADMINISTRATION** BY NO LATER THAN **Monday August 3**
- Some students may be interviewed to assess suitability
- Students and parents notified of courses in **October**
- Deposit for courses due in **November**
- Transition **sessions early December**
- Course commences February 2021

Vocational courses will only run with a minimum of 15 students

Some courses have a maximum of 22 students

Deposits must be paid to ensure a position in a class

ACCESS classes are generally capped at 24 students

The students will select subjects on a paper form distributed with the course booklet

At the top of the form there is a question that asks if you wish to apply for ACCESS. **You will need to tick the box if you wish to do so.**

Once all selections are in, a fees letter will be sent to parents, notifying them of what they or their child has selected. They will have the opportunity to adjust selections. This will happen in early Term 4.

Guidelines

- Select 4 subjects.
- No more than 2 x Arts subjects.
- No more than 2 x Technologies subjects.
- 1 reserve for each area
- Music students must select 0MU1 – Music and 0MU2 – Music, a Technologies subject and one other subject.

Selections may be influenced by

- How soon you return your form
- The number of students selecting specific subjects.
- Some subjects may be timetabled at the same time as some of your other subjects.



My Selections – Year 10, 2021

Tick the group you belong to and write your selections including the subject code (e.g. ODN – Design) in the boxes.

- I wish to be considered for the Year 10 ACCESS program
Tick the box if you wish to be considered for the Year 10 ACCESS program

- Music student (Tick if you are a music student and add your selections below)

- Selection 3 MUST be a Technologies subject.
- Selection 4 can be any subject from any Learning Area.

Selections

1. OMU1 – Music Semester 1

3. Technologies:

2. OMU2 – Music Semester 2

4. Any Subject:

- All other students (non-Music students)

- Selection 1 must be an Arts Subject.
- Selection 2 must be a Technologies subject.
- Selections 3 and 4 can be from any learning area except that you may only select a maximum of ONE subject from each Learning Area.

Selections (list in order of preference)

1. Arts:

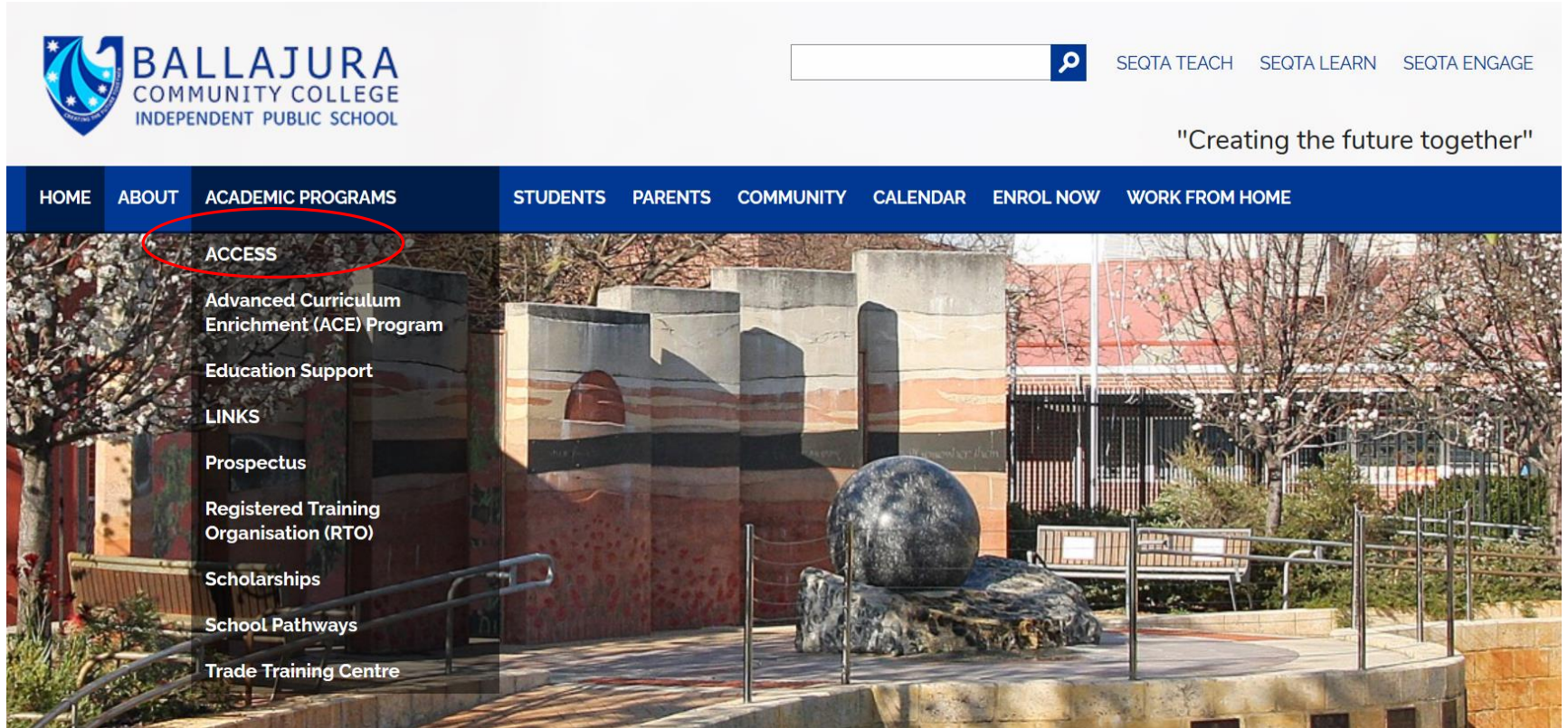
3.

2. Technologies:

4.

This PowerPoint is available on the College Website:

BCC – Parents – Academic Programs - ACCESS



The image is a screenshot of the Ballajura Community College website. At the top left is the college's logo, which features a stylized blue and white emblem with the text "BALLAJURA COMMUNITY COLLEGE INDEPENDENT PUBLIC SCHOOL". To the right of the logo is a search bar and three links: "SEQTA TEACH", "SEQTA LEARN", and "SEQTA ENGAGE". Below these is the tagline "Creating the future together". A dark blue navigation bar contains the following menu items: "HOME", "ABOUT", "ACADEMIC PROGRAMS", "STUDENTS", "PARENTS", "COMMUNITY", "CALENDAR", "ENROL NOW", and "WORK FROM HOME". The "ACADEMIC PROGRAMS" menu is expanded, showing a list of options: "ACCESS" (circled in red), "Advanced Curriculum Enrichment (ACE) Program", "Education Support", "LINKS", "Prospectus", "Registered Training Organisation (RTO)", "Scholarships", "School Pathways", and "Trade Training Centre". The background of the website is a photograph of a modern building with a large, dark, spherical sculpture in the foreground.

BALLAJURA

COMMUNITY COLLEGE

